

Clwydian Range and Dee Valley AONB

Sustainable Development Fund Annual Report 2020

Prepared for Joint Committee on Friday 25th June 2021

1. Introduction

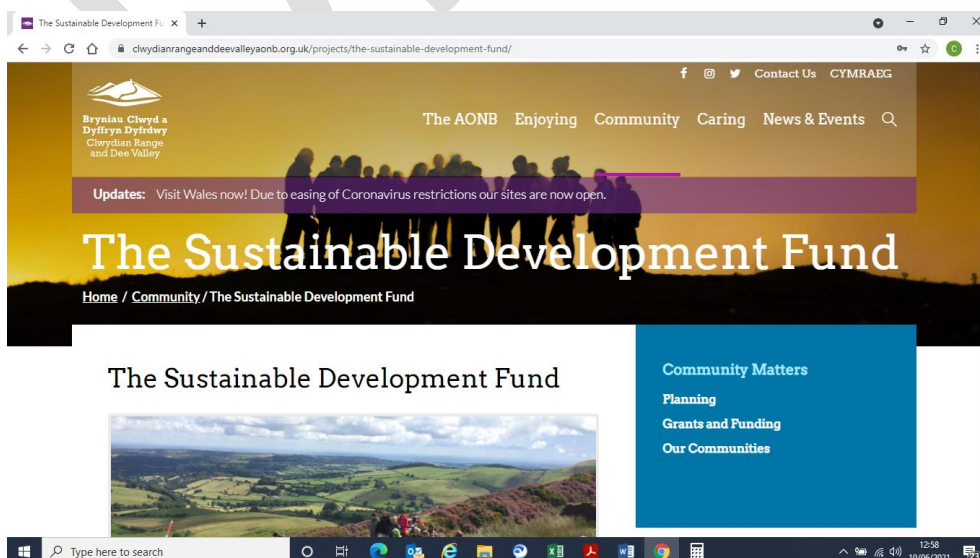
Welcome to the Clwydian Range and Dee Valley AONB's Sustainable Development Fund Annual Report for 2020. This report covers the financial period of April 2020 to March 2021. During the years the Sustainable Development Fund (SDF) supported 18 projects, 5 Countryside Grant Schemes and 1 Community Transport Schemes.

SDF contributed a total of £95,000.00 in project grants from an overall budget of £100,000 (The £5000 represents the 5% administration fee retained by the AONB). The total value of the SDF programme including cash match funding, volunteer time and in-kind contributions amounted to £209,474.38

The 2020 CRDV SDF Programme was mainly co-ordinated by the permanent Sustainable Development Officer Ceri Lloyd following return from her maternity leave on the 1st April 2020. Many projects had been developed by Paul Mitchell who was recruited on a Fixed Term Agreement.

2. Publicity

The CRDV AONB are fortunate to not need to heavily publicise the SDF as demand/need is always much greater than availability and the AONB do not want to disappoint prospective applicants. The fund is publicised on the AONB's website and that of Denbighshire County Council. Information is shared with local voluntary councils. The AONB is publish information on their social media platforms including Facebook, Twitter and Instagram. Information is also made available to the AONB's Community Champions (representatives from each Town and Community Council in the AONB).



3. Assessment Panel

Due to the significant impacts of the Covid-19 corona virus pandemic it was not possible for the Sustainable Development Working Group Panel to meet as ordinary during 2020. This was of great disappointment to AONB staff and working group members who enjoy this face to face interaction. The first panel took place via e-mail correspondence which proved challenging for all. This did not allow for customary flow of debate and discussion however a consensus was reached. Members were requested to 'reply all' when responding to the consultation in order to stimulate discussion and ensure general awareness of expressed views and comments.

For the subsequent two meetings were held over online video conferencing facilities. Once all technical issues were resolved productive meetings were held and whilst this method would never be favoured to meeting in person the panel were much happier to be able to query and debate projects in a timely fashion.

Another disadvantage of meeting online is that we have historically tried to meet at locations which have received Sustainable Development Funds where the group are given a short introduction from a previous applicant who update the panel on the progress of their different ventures.

Three SDF Panel meetings were held to consider the 2020/21 programme:

- 24/4/20 –e-mail exchange
- 1/9/20 – online meeting
- 15/10/20 – online meeting

Panel members represented the CRDV AONB Joint Committee, the AONB Partnership, the AONB Management Service, and Natural Resources Wales. Members were:

Member	Representing	Public	Private	Voluntary
Alun Price	Natural Resources Wales	✓		
Andy Worthington	AONB Partnership			
Christine Evans	AONB Partnership			
Cllr Hugh Jones	AONB Joint Committee	✓		
Ian Papworth	AONB Partnership			
John Roberts	AONB Partnership			
Michael Skuse	AONB Partnership			
Cllr Paul Cunningham	AONB Joint Committee	✓		
Roger Cragg (Chair)	AONB Partnership			✓
Cllr Tony Thomas	AONB Joint Committee	✓		
Howard Sutcliffe	AONB Management Service	✓		
David Shiel	AONB Management Service	✓		
Ceri Lloyd	AONB Management Service	✓		

4. Application Process

As mentioned above applications for consideration were sent to panel members approximately two weeks ahead of the decision making date. The AONB Team provide a summary of each project application with an outline scoring linked to the Core and Other criteria set out by the Welsh Government in the SDF Guidance. The scoring is a guide only.

Contentious Applications;

Perfect Firewood REMARC

An information dissemination project aiming to improve knowledge and awareness in supply, storage, seasoning and burning of firewood in fires and wood burners. The scheme wanted to provide detailed advice on how to season and store firewood to improve energy efficiency and reduce emission of harmful pollutants (PM2.5) during burning. It also wanted to target producers and suppliers of firewood to improve quality and enhance economic value and farm incomes. The total cost of the project was £14,850 and an SDF contribution of £4,455 was sought.

Consensus confirmed this scheme did not represent value for money and was flawed in its concept and objectives. Panel members advised there were sufficient existing sources of information relating to storage and use of firewood including government guidance. It was also proposed that the established businesses within the AONB were compliant with good practice, guidelines and regulation, therefore negating the need for further information and guidance.

Further information on the scheme circulated to the Panel prompted discussion around potential future legislation or regulation in Wales and air quality/climate change priorities for Welsh Government. 3 Panel members indicated some level of support if the scheme was confirmed as a Welsh Government priority. 5 members maintained strongly argued opposition. 1 member was undecided.

Shape my Llangollen

An application to commission a Place Plan to sit alongside the Llangollen Community Plan, an initial vision document prepared by the Town Team. The Town were in the process of moving to the publication of an action plan just prior to the restrictions put in place during the Covid-19 pandemic. Covid-19 has not only hindered progress on the plan, in terms of public consultation, but has also brought a raft of other issues to the fore that will now influence and guide the plans for the town. The Town Team were therefore faced with not only progressing the work done to date, but also to look at aspects relating to the effects of the pandemic. The team, whilst having been keen to keep the process free from any external input, believed that assistance was required to help to validate the Draft Action Plan with the community and to be able to focus rapidly on the priorities needed to emerge from the pandemic whilst recognising the work that has been undertaken to date.

The Town Council have financially supported the work of the Town Team throughout the process but due to COVID19 the funds available to offer more support at this time are severely limited as the Town Council has lost significant levels of income. However, the need to develop a plan to support recovery post Covid-19 is a priority and therefore external funding was sought to allow the work on the Place Plan to continue and move forward to allow the identified recovery actions to be expedited.

SDF Panel members felt that supporting this application would set a precedent for any other community to apply to SDF for similar support which the panel could not endorse. From experience members were aware that every other town in and around the AONB is funding their own Place Plan and the research needed. There was also concern regarding ownership of the plan if external consultant would be engaged at this stage of the process.

1 Panel member declared an interest in the project as a local resident. 6 member voted against supported and 2 members were undecided.

5. Financial Summary

- The total SDF grant from Welsh Government was £100,000.00
- The total amount levered in as match funding was £130,255
- Cash levered in from the public sector was £117,511.00
- Cash levered in from the private sector was £3,102.00
- Levered in voluntary/contributions in-kind were worth £9,642.07
- Administration costs of 5% were claimed totalling £5,000.00

6. Breakdown of individual projects, to include;

Reference	Project Name	Applicant Organisation
CRDV20_01	Eat Stay Do	Clwydian Range Tourism Group
CRDV20_02	Sudd Afal 2	Sudd Afal Cwmni Buddiant Cymunedol
CRDV20_03	Corwen Community Garden	Clwydian Range and Dee Valley AONB
CRDV20_04	CPAT Chirk Castle	Clwyd Powys Archaeology Trust
CRDV20_05	Eco-Connectivity NWWT	North Wales Wildlife Trust
CRDV20_06	Active Woods Coed Lleol	Coed Lleol / Small Woods Association
CRDV20_07	Gwlangollen Yr 2	Gwlangollen
CRDV20_08	Dark Skies 2020	Clwydian Range and Dee Valley AONB
CRDV20_09	Gwaenysgor Wall Restoration	Gwaenysgor Conservation Group
CRDV20_10	Our Picturesque Landscape	Our Picturesque Landscape project team
CRDV20_11	Udfilod a Grug	Sean Harris
CRDV20_12	Sustainable Tourism Coordinator	Clwydian Range Tourism Group
CRDV20_13	Flintshare - Phase 3	Flintshare
CRDV20_14	Nature for Health 2020	Clwydian Range and Dee Valley AONB / Denbighshire Countryside Service
CRDV20_15	Tafarn y Gelyn	Llanferres Playing Field & Recreation Association
CRDV20_16	Grow Llangollen CSA	Llangollen and Dee Valley Food and Drink
CRDV20_17	Trevor Hall	
CRDV20_18	Corwen Giant	

CRDV20_01 – Stay Eat Do

Applicant	–	Clwydian Range Tourism Group
SDF	–	£6,020 (29% of total £20,520)
Match funding	–	Rural Development Programme LEADER £14,500

This was the third and final year the Sustainable Development Fund provided funding towards this project.

The Feasibility Study which proceeded and bore this project advised the following three-phase approach:

Phase 1: Capacity building: to develop, as a group, a strategic understanding of the Clwydian Range Tourism Group's (CRTG) tourism proposition and appropriate markets;

Phase 2: Development of product clusters

Phase 3: Development of a combination of routes to market, including working with GoNorthWales (GNW) whilst also working with private sector operators to promote tailored group product and service offerings.

Further to these 3 phases, the Stay Eat Do project aimed to develop over the period, October 2018 to June 2021, a sustainable model for taking the STAY, EAT & DO concept beyond the duration of this pilot project.

- Attract overnight visitors to the area and encouraging them to stay longer and do more during their stay by integrating the 'Stay, Eat, Do' elements of their experience;
- Develop sustainable forms of linking and working together that maximise the potential for local economic benefit to the area and create an environment in which local businesses can develop and thrive;
- Create unique products that offer the visitor an enhanced experience through developing a stronger 'sense of place' as well as recreational activities, local experiences, Welsh culture and language and local food and drink.

Julie Masters was appointed in Nov 2018 to lead the project.

The project was greeted with enthusiasm and engagement in sectors of tourism businesses who were already good at engagement: Some of the lessons learned and gaps identified:-

- Quality businesses do not necessarily have the time to consider what the Itinerary market needs or what price it will pay - Close analysis of benefits accrued from linked travel and their existing business model is necessary.
- The issues around Package Travel Regulations and Linked Travel Arrangements need proper discussion - to avoid a "Test Case" through the courts.



- Tour Operators need a good supply chain to know what is available in the area - be happy with the quality and professionalism to add to their offer.
- Accommodation businesses love to see what others are doing but do not have the opportunity to have a look or a chat – therefore the “Curious Neighbours” initiated.
- Providers are busy with their businesses - they need an honest broker who will encourage engagement only when it could be of real benefit. Somewhere to discuss minor operational issues; or ask for contacts of people who may be helpful to them.
- As lockdown eases - from previous experience, quality accommodation will be over capacity but the management of cleaning/booking/digital operations - both social media and operational issues/social distancing rules/new catering regimes. - all of this has time resourcing issues and skilled staffing needs.
- Activity providers, in general, did not engage initially with the project, as many who are involved in the more obvious activities such as cycling, walking, adventure sports were already trading to their maximum capacity.
- There are businesses on the edges of “Tourism” i.e. Arts and Farming that could find other income streams from Tourism Experiences - they are difficult to engage.
- Businesses are not clear about which groups offer a benefit to them for their engagement as they have limited time and financial resource.

Promotional Activities

- Built on year 1 & 2 working with CRTG Newsletters (over 250 businesses circulated)
- Working with Business Wales and Visit Wales to show the work being done in Rural hinterlands
- Working with AONB with ITV on Offa’s Dyke programming
- Interviewed by ITV news identifying the problems that small businesses in the Pandemic



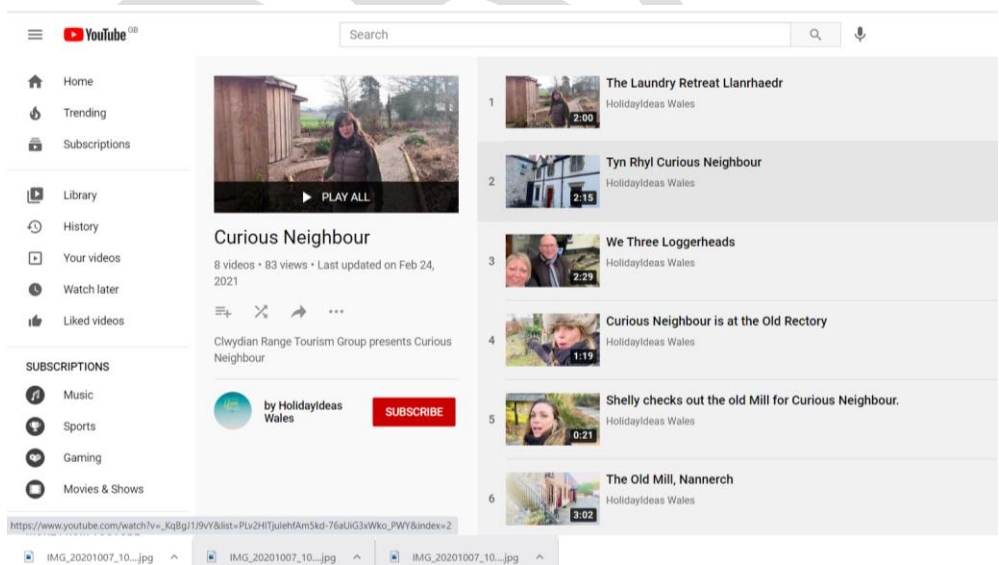
Business Clusters

Due to the difficulties arising from both COVID and the Package Travel regulations (making it a criminal offence for businesses to work together without Financial Failure insurance) - we encouraged support, preparation for non-lockdown and wider collaboration without formal packages being formed - with smaller Itineraries

- Zoom event - Ready for trading post pandemic (summer 2020) - support grouping
- Networking event - Ruthin Castle: collaborative working between Castle Spa and small accommodation /activity providers.
- Curious Neighbours - small group of providers learning IT skills and allowing others to benchmark their businesses against the established offering
- AirBnB x3 events - creating small itineraries from a diverse group of businesses to develop a greater visitor offering
- Supporting the development of further Itineraries through Adventure Tours UK - by helping recruit suitable tour guides for their bespoke tours (4 new business contacts made)

AirBnb Experiences - 5 businesses already on the platform (Way of mindfulness; Theatre Clwyd; Plas Newydd; Wernog Woods; Mynydd Sleddogs) Several more in the pipeline

Outputs	Management Plan
<ul style="list-style-type: none"> • Promotional Events x 5 • Bookable offers x 5+ • Businesses engaged in the project x 66 • Clusters developed x 5 	<ul style="list-style-type: none"> • PoIART1 – To promote the sustainable use and enjoyment and understanding of the landscape of the AONB in a way that contributes to local prosperity and social inclusiveness • IVCO1 – Ensure that visitors and the tourism industry understand the need for, and support the conservation and enhancement of, the special qualities of the AONB as key assets upon which tourism is based. • IVO7 – Assist tourism businesses to embrace the opportunities and responsibilities of being in a protected area • ODPO6 – Investigate ways to promote the Trail with local tourism businesses and to develop initiatives that will strengthen businesses links • PoICP3 – Ensure that local businesses and communities feel a sense of ownership and responsibility for their surroundings
Outcomes	
<p>The project has experienced a number of challenges from its inception back in 2018 from travel package regulations to industry lockdown. The project has been a lifeline for many struggling businesses in the tourism sector and provided a source of comfort through networking activities.</p>	
County Split	
<p>Pan AONB</p> <ul style="list-style-type: none"> • Denbighshire • Flintshire • Wrexham 	



CRDV20_02 – SUDD

Applicant	–	Clwydian Range and Dee Valley AONB
SDF	–	£3,525 (75% of total £4,700)
Match funding	–	£500 Sudd Afal Cwmni Buddiant Cymunedol (11%) / £675 Time in-kind contribution (14%) / Apple donations

Starting in 2019, with the support of the Clwydian Range and Dee Valley AONB, Sudd Afal Cwmni Buddiant Cymunedol's project makes use of the abundance of fruit in the locality – mainly apples, that are usually left unpicked, ending up falling from the trees and rotting.

Following a similar pattern to other similar ventures, the unwanted/unused apples were collected (either by project lead Heledd Iago, or by the apple owners, and brought to a designated collection site(s)). These apples were pressed into apple juice and bottled, then pasteurised (pressing, bottling and pasteurisation at Dunham Massey, Altrincham) and labelled ready for sale. A local transport company was hired to transport the 3 load of apples to Altrincham, and to bring the bottled juice back to Gellifor. 877 750ml glass bottles were produced this year (2020). A further load of apples were left with Dunham Massey to be fermented into cider as a trial – the cider will be ready within a couple of months.



The pasteurised apple juice has a shelf life of 2 year, therefore ideal to sell in the local shops and markets in the lead up to Christmas and thereafter. Our apple juice was labelled and marketed to highlight and promote the Clwydian Range and Dee Valley AONB. Our bottle labels use the AONB brand colour scheme and the range graphic. The juice is sold in local shops, including Clwyd Williams Family Butcher Llandyrnog, Chilly Cow Ice Cream Honesty Box Llanynys, Clyttir Egg Farm Gellifor, Naturally Ethical Ruthin, Ruthin Wholefoods, Siop y Pentre Llanrhaeadr, Siop y Parc Dinbych, Te yn y Grug Dinbych, Deli on the Hill Prestatyn and Swans Farm Shop Treuddyn. We wholesale to these outlets at £3.50, who sell the apple juice on for between £4.50-£5.50, leaving local businesses with a margin of between £1-2 on each bottle they sell. To date 460 bottles of the vintage 2020 juice has been sold.

We are now an established Community Interest Company, with a plan to gift a proportion of surplus profits directly back into the locality by means of wildlife, conservation and community-based/led projects. Our first window for applications to our project sponsorship fund closed on January 31st 2021. We received 2 applications, who, after consideration by our funding panel, were both awarded £150 each toward their projects. The first project is a community garden in Gellifor, where funds will go toward buying plants and equipment for the garden. The second project is by DrosiBikes CIC who promote sustainable transport and bike restorations, to run a bike workshop.

We are also proud to have signed the Ruthin Plastic Free pledge – and will do as much as possible to reduce, limit and stop using plastic in our work wherever possible.



Outputs	Management Plan
<ul style="list-style-type: none"> • 100+ hours of volunteer time • 1 x Local contactor engaged • 50+ people engaged in the project • Frequent social media activity to promote the project 	<ul style="list-style-type: none"> • PoHW4 – Ensure that the natural benefits and services of the landscapes are properly understood and valued. • HSAO3 – Increase the profile of the Historic Environment through effective and consistent interpretation and information. • PoICP3 – Ensure that local businesses and communities feel a sense of ownership and responsibility for their surroundings. • BEO2 – Conserve and enhance the character and local distinctiveness of historic villages, buildings and gardens within the AONB.
Outcomes	
<p>By producing and selling local grown and pressed apple juice, this projects has achieved a more sustainable way of living in the countryside. It has used otherwise unwanted apples to produce a marketable product, sold it locally thereby increasing the local economy, and feeding back into the community and into conservation projects in the AONB with the project sponsorship fund.</p>	
County Split	
<ul style="list-style-type: none"> • Denbighshire 	

CRDV20_03 – Corwen Community Garden

Applicant	–	Clwydian Range and Dee Valley AONB
SDF	–	£5,000 (91% of total £500)
Match funding	–	Dŵr Cymru £500 (9%)

Corwen Community Garden is located within the community orchard near the centre of town, and is a resource for all members of the community. The volunteer group meet each Wednesday, providing a social opportunity and making a contribution to the Health and Wellbeing of the participants. In between laughter, coffee and biscuits, fresh fruit and vegetables are grown – as well as wildlife-friendly plants.

The garden is run by a small and very dedicated group of volunteers with assistance from the AONB team. The fruit and vegetables grown have been much admired, and a lot of it is shared with local community, with donations to the Cysgod y Gaer care home and groups in the Canolfan Ni. Produce is also regularly put out for anyone to help themselves to.

Application for funding was to construct a new slanted roof onto the existing flat-roofed shed (a former shipping container), as well as an overhanging pergola, guttering and hardstanding was laid beneath the pergola as well as three new raised beds. These additions have extended the lifespan of the container as the current roof is starting to rust, provide shade and shelter from adverse weather that is accessible to all, and enabled the volunteers to harvest and collect rainwater, reducing the need to collect water from Llangollen Railway, which is quite physically demanding.



Outputs	Management Plan
<ul style="list-style-type: none"> • 1 x accessible outdoor area for community garden • Volunteering opportunities 	<ul style="list-style-type: none"> • PolHW4 – Ensure the natural benefits and services of the landscape are properly understood and valued. • PolCP3 – Ensure that local businesses and communities feel a sense of ownership and responsibility for their surroundings. • BEO2 – Conserve and enhance the character and local distinctiveness of historic villages, buildings and gardens within the AONB.
Outcomes	
<p>The new structure has enabled the volunteers to harvest and collect rainwater, reducing the need to collect water from Llangollen Railway. This has benefited the volunteers by allowing more time for gardening, reducing this frequency of this physically demanding activity and has raised the spirits of the group enormously.</p>	
County Split	
<ul style="list-style-type: none"> • Denbighshire 	

DRAFT

CRDV20_04 – CPAT Chirk Castle Excavations

Applicant	–	Clwyd Powys Archaeological Trust
SDF	–	£5,000 (34% of total £14,825)
Match funding	–	£9, 852 (66%) Cadw Grant funding with contribution in kind from support staffing and site facilities by National Trust, Chirk Castle.

Following numerous cancellations owing to Covid-19 restrictions CPAT safely delivered the Chirk Castle community excavation project in November – December 2020. The archaeological investigation was conducted over a period of 17 days (9th -27thNov) with an additional 2 days (1-2nd Dec) for re-instatement.

In 2019-20 CPAT delivered a successful community excavation at Chirk Castle, which followed a project the previous year at Chirk Castle and Erddig. The project has successfully attracted funding from both Cadw and the National Trust, and produced a wide range of community wellbeing outcomes as well as exciting archaeological results which have attracted wide audiences. In previous years fieldwork at Chirk had focussed on Offa’s Dyke (to which in 2019 the AONB’s Sustainable Development Fund aided support towards scientific C.14 Radiocarbon dating and palaeoenvironmental analysis). The Chirk Castle 2020 Project focused on the medieval and post-medieval landscape around the castle, in particular on a building identified in the 2019 season. Again this created opportunity for collaboration with the AONB, National Trust and Cadw in delivering a substantial project with meaningful outcomes for volunteers and local communities.



In 2019 new opportunities were developed to explore the evolution of the later medieval landscape of Chirk Castle. Several trenches were opened exploring features which had been identified by aerial photography and geophysical survey. These contained substantial remains of former structures associated with the gardens and the castle. The Research Framework for

the Archaeology of Wales identified ‘the relationship of masonry castles to designed landscapes of parks, gardens, fishponds, warrens and forests’ as one of the key issues for this period.

The 2020/21 project continued exploring these later landscapes, and specifically the eighteenth-century buildings.

Buildings shown on eighteenth-century mapping. →



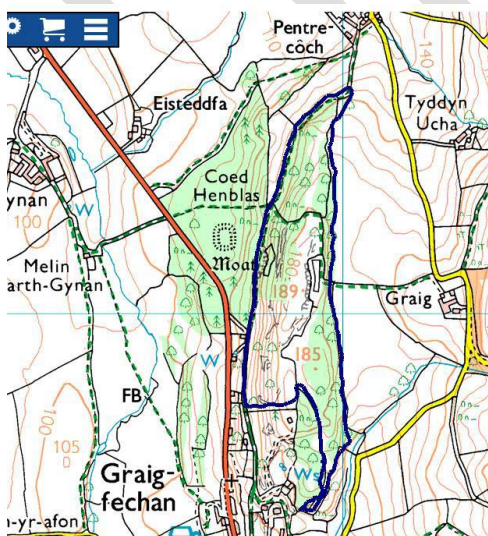
The proposed work programme focused on the excavation of the south-westerly building (referred to for the purposes of the project & media as the ‘Lost Building’). In 2019, limited trial excavation discovered traces of a building below the castle, located in the woodland. With a footprint as large as one of the existing towers it appeared that we had found the site of a considerable stone built structure the nature of which was presently unknown. Some of the artefacts recovered appeared to suggest the building may have been partly used as a foundry/smithy. The post-medieval buildings were not known to have survived in any form prior to the 2019 excavations, and the 2020/21 project was designed to further elucidate their form and state of preservation. The evolution of the designed post-medieval landscape has not been explored archaeologically, and this project provided an opportunity to increase understanding of this aspect of Chirk Castle’s history and interpretation, which will also have implications for other sites in Wales.

CRDV20_05 – Eco-connectivity Graigfechan

Applicant	–	North Wales Wildlife Trust
SDF	–	£7,000 (63% of total £11,184)
Match funding	–	Natural Resources Wales £2,484 (22%) Private Donors £1,200 (11%)
		Volunteer time in-kind £500 (4%)

This second year of the two year project sought to continue to support the communities of Llanfair DC, Graigfechan and Pwllglas in the management of local nature reserves and enhancing biodiversity in the wider landscape of the AONB. The overall aim was to create links between sites of significant biodiversity value by creating wildlife friendly corridors and also link local communities with each other through engagement with their local natural environment.

Photo from Graig Wyllt (Graigfechan) to Coed Cilygroeslwyd (Pwllglas)



The project has also been working with a local landowner on an area of land which the proposed extension to Graig Wyllt (including Graig Farm land)

Area: proposed extension: 7.93Ha
bringing the total area of Graig Wyllt to 15.01Ha.
2.6Km perimeter

This area which is also a well-used public footpath has been fenced off and gated with 160m hedgerow gapped up and fenced to exclude livestock and improve wildlife corridor from Garth Gynan Mill up to Coed Henblas woodland (neighbouring Graig Wyllt nature reserve. All within the AONB. The mill is known to host a Lesser Horseshoe bat roost, which have also been recorded at Graig Wyllt.



←↖↑The landowner is also reducing hedgerow management to a bi-annual cut to encourage movement through the landscape.

100m Hedgerow planted and fenced on 'Eisteddfa' land across the road from the previous picture (next door to Coed Henblas) providing further future corridor habitat. →



← Tree work and volunteers felling trees near footpaths at Graig Wyllt



← 100m Hedgerow planted and fenced on 'Eisteddfa' land across the road from the previous picture (next door to Coed Henblas) providing further future corridor habitat.

Old limekiln Bat survey by Enfys Ecology before repair work begins →



← New style erected on private land neighbouring Graig Wylt closing the walking loop from Graigfechan around the nature reserve and connecting back to the village through a permissive path and common land

Pant Ruth has played host to several Grŵp Gwylt meetings on the first Saturday of the month during the two-year period of this project. Local young families gather to volunteer for conservation tasks and learn about nature.



The site has also been surveyed. Small self-sown trees and scrub has been cleared to increase light penetration to the woodland floor and rocky cliff faces adorned with ferns, liverworts and mosses. Bird boxes erected, new gate installed, new bench installed.

Other notable achievements include;

Gapping up' and planting new hedgerows	*Planting 100m hedging and fencing at 'Eisteddfa' *Planting 160m hedging and fencing at 'Garth Gynan Mill' public footpath route
Planting new trees on private land	Pen y Bryn Isa LL15 2HB. Planted with trees supplied through this project. <ul style="list-style-type: none"> • Birch 40 • Cherry (wild) 10 • Crab apple 10 • Elder – 20 • Field maple 10 • hawthorn 20 • oak (sessile) 40 • Small-leaved lime – 10 • Spindle – 10 • Whitebeam – 40 • Willow – 20 Total: 230 trees covering a 500m.sq area
Trail cameras installed at key locations to help monitor impact.	Cameras installed to monitor Otter Holt and old school site at Llanfair dc.

Outputs	Management Plan
<ul style="list-style-type: none"> • 320 hours of volunteer time • 15 volunteer/public events • 7 local contractors supported • 3 promotional items • 250 people engaged • 230 trees planted • Planting 100m hedging and fencing at 'Eisteddfa' • Planting 160m hedging and fencing at 'Garth Gynan Mill' public footpath route 	<ul style="list-style-type: none"> • PoISQ2 – Secure the equitable, sustainable use of the area's natural resources to conserve and enhance the special qualities of the AONB. • LQC07 – Develop Partnerships that will help to stimulate awareness of an interest in the rich and cultural dimension to communities in the AONB. • PolHW1 – Secure natural systems and networks that provide more and better places for nature for the benefit of wildlife and people • PolHW4 – Ensure that the natural benefits and services of the landscape are properly understood and valued. • WVTO4 – Develop publically owned woodlands as models of best practice in broadleaf woodland management • RVO1 – Continue to monitor the extent of key indicator species such as otter and water vole in order to gauge habitat condition.
Outcomes	
The project has conserved and enhance the natural beauty of the AONB and surrounding area by improving, creating and managing favourable habitat to further enhance the beauty of the area and support the survival and potential spread of wildlife in general.	
County Split	
<ul style="list-style-type: none"> • Denbighshire 	

CRDV20_06 – Active Woods Wales

Applicant	–	Coed Lleol
SDF	–	£14,612 (40% of total £36,530)
Match funding	–	£21,918 (60%) Healthy and Active Fund Natural

The Sustainable Development Fund supported Coed Lleol to support individuals to improve their health through regular woodland-based group activities involving physical activity and engagement with the natural environment; during the Covid-19 outbreak this was replaced with support to individuals to improve their mental wellbeing through connecting with nature through remote services, supporting people to access nature in their locality.

In March 2020 lockdown challenged Coed Lleol to rethink how they could deliver the woodland wellbeing programme differently. This led to the #Naturefix programme that included daily National Nature and Wellbeing Sessions on Zoom. These covered themes such as Foraging and Nutrition, Nature Watch, Family Nature Activities, Physical Activity Sessions, and Mindfulness. They also started weekly local Zoom sessions that enabled existing participants to continue engagement with the project and each other. For participants who were not online, a telephone befriending service was set up with a focus on nature and wellbeing. To support people online, at any time of the day or night, they also made several 'wellbeing and nature' YouTube videos, currently viewed by over 7,000 people.

Actif Woods Wrexham has run a popular weekly walking group for many years with upwards of 40 members. The referrals were originally from Macmillan Cancer Care and Alzheimers UK. This formed a key part of the social and physical wellbeing of the participants week – many of whom were retired, suffering from longer-term illnesses or were socially isolated. Lockdown was particularly challenging for this group, so



Actif Woods Wrexham responded with a series of weekly online Zoom sessions that focused on Nature and wellbeing and provide vital social opportunities for the participants. So far, Actif Woods Wrexham has run 40 weeks of sessions, attracting 15 regular participants, many of whom had not taken part in video conferencing before. This group has continued throughout the year with support from volunteers and the Project Officer discussing various nature-based topics including fungi, wildlife quizzes, nature poetry, traditional crafts and birdsong identification. This group has provided a valuable support network for a group who could be very isolated during a difficult year.

Also, Actif Woods Wrexham undertook weekly telephone befriending calls with 30 participants to provide personal contact and a social focus for those participants without the use of the internet or who were not digital natives these were delivered as 'Nature Chat' providing a link to discuss nature and encouraging participants to be mindful of the changing of the seasons, bird watching from the window and simple accessible activities to discover linked to the local area.

The project officer from Wrexham also led the National Mindfulness sessions that has currently run for 35 weeks and attracted 26 participants from all over Wales. These sessions were run by the Project Officer who has recently completed qualifications in mindfulness and is trained and experienced to share her knowledge.



Once lockdown eased the walking group was resumed with restricted numbers due to social distancing concerns. These have attracted 25 participants with an average attendance of 9-10 per walk. These walks have provided a sense of belonging and structure to a group of people as well as physical exercise and a reason to get out. The walks have been in a range of areas from Loggerheads, Chirk, Llanferres, Ty Mawr, Erddig, Bonc y Hafod and Maes y Pant where element of nature have been discussed as well as links and knowledge of the AONB. The group is fortunate in having a keen volunteer who leads on almost every walk, together with the support of the project officer.

Actif Woods Wrexham participants who received telephone befriending calls commented,

“It raised my spirits to receive friendly, supportive calls enquiring about my wellbeing. It was nice to know that someone cared. The telephone befriending has had a positive effect on my mental state. It has shown me how important it is to stay connected with nature and being part of Actif Woods gave me the confidence to continue walking during this time. I really appreciate the return of the walks, the company and the environment”

Outputs	Management Plan
<p>89 Volunteer hours recorded</p> <p>Training</p> <ul style="list-style-type: none"> • Volunteers trained in First Aid and Agored units developed <p>Events</p> <ul style="list-style-type: none"> • 30 befriended • 43 zoom sessions • 35 National zoom sessions <p>Social media activity</p> <ul style="list-style-type: none"> • 24 You tube videos • 24 How2 guides • 298 Facebook posts 	<ul style="list-style-type: none"> • PoISQ2 – Secure the equitable, sustainable use of the area’s natural resources to conserve and enhance the special qualities of the AONB. • LQC07 – Develop Partnerships that will help to stimulate awareness of an interest in the rich and cultural dimension to communities in the AONB. • PolHW1 – Secure natural systems and networks that provide more and better places for nature for the benefit of wildlife and people • PolHW4 – Ensure that the natural benefits and services of the landscape are properly understood and valued. • WVTO4 – Develop publically owned woodlands as models of best practice in broadleaf woodland management • RVO1 – Continue to monitor the extent of key indicator species such as otter and
Outcomes	
<p>This project has improved people’s health and wellbeing through social prescribing to regular activities in woodlands, which incorporates physical activity, nutrition and woodland skills. Training for activity leaders and partner organisations has</p>	

ensured high quality activities and long-term sustainability. This project focused on work in and around the AONB. It focussed on increasing participants understanding of, and interest in the AONB.

water vole in order to gauge habitat condition.

County Split

- Pan AONB

DRAFT

CRDV20_07 – Gwlangollen

Applicant	–	Gwlangollen
SDF	–	£2,500 (50% of total £5,000)
Match funding	–	Armoury Conservation Trust £2,500

Gwlangollen is a project aimed at encouraging local wool fleece producers and crafters to explore the potential of working in closer collaboration to secure production and provide economic benefits through a shortened supply chain. In 2018/19 the Sustainable Development Fund supported the project to continue and develop the weekly Maker Day outreach provision initiative.

This second year of funding has enabled the group to secure rental space for the project at the Lockup building in Llangollen. Thanks to the hard work of volunteers the workshop is now appropriately equipped, well stocked and ready to welcome producers wishing to rent the space and equipment on an hourly basis, or for crafters to book bespoke tutorials on a range of Heritage Skills (Covid dependent). They have produced:

- 3 free standing display units and scissors holder from recycled fence rails
- 2 wooden work tables.
- Hand-stitched leather cases for the sharp tools used for courses.
- Lucets, jigs, frames and looms of all sorts for loan or courses
- Wooden shelf unit for embroidery silks.
- A free standing step to enable short crafters to safely install the rollers on the felting machine (purchased by SDF in 2019)



Unfortunately, due to Covid less face to face activity has taken place in the workshop than the group originally anticipated. All the planned income generating opportunities - community events, courses and room rental had to be cancelled, which was hugely disappointing. Anticipated income from retail has been severely eroded due to the prolonged closure of unessential high street retail outlets.

Despite these challenges the group have undertaken some impressive developments as detailed below;

Community sheep dressing

In Dec 2019, Gwlangollen was approached by a member of the Methodist Church concerned about the lack of mid-week social interaction experienced by some of the congregation. They therefore decided to hold a community sheep dressing in Jan 2020. People were invited in 2-4s to discrete knitting sessions in a variety of town centre venues – church coffee morning, library, the workshop and local tea shop. Coffee, cake, wool and needles were provided for people to create 25cm knitted squares. Two volunteers welded the life size metal frame to support the work. The squares were stitched to a recycled woollen blanket. The March lockdown 2020 prevented participants continuing face to face. It was very heartening however to see the majority continuing at home, then returning their completed squares. The local response to the post on Llanblogger was very positive.



Rural Futures

Gwlangollen signed a formal partnership agreement with Pentredŵr Community to help take Hwb Pentredŵr forward. Gwlangollen has committed to working 1 day a week at the Community Centre. This involves facilitating Maker Days on Fridays, line managing the Hwb Pentredŵr project co-ordinator and reporting to the Hwb steering group made up of 3 Pentredŵr committee members. The project will begin from the date the project co-ordinator is in post. This will bring Gwlangollen £5000 per year for the next 2 years.

Gwlangollen Wool Recycling

The project has set up 4 collection points – the workshop, Plas Newydd, Pentredŵr and a high street retailer. Items we welcome include unused knitting wool, knitted garments for unpicking and any unwanted equipment associated with wool-based crafts. The donated yarn will be used for community activities designed to engage with socially isolated people living in the Llangollen/ Dee Valley area. The equipment will be loaned out. Discussions are currently underway with the Pengwern Community Dev Officer, Ymestyn (befriending org) and South Denbighshire Community Partnership.

Wool Clip

An informal group of local hill farmers working with Gwlangollen to investigate the possibility of setting up a processing plant, to manufacture agri/horticultural products using locally produced fleece. The table below are ideas currently being tested by interested individuals or organisations

Felted fleece	Woven fleece
“Vegan” rugs (no skin or slaughter involved) Whole fleece felted mats and seat pads.	Bespoke sound suppressant/acoustic panels for large multi-use rooms and home recording spaces

Planter and hanging basket liners to save sphagnum moss	Slug mats to put round home grown vegetables
Capillary watering/feed systems for poly-tunnels	Mud mats to protect heavy use gateways from degeneration by tyres and hooves, unmade walk ways between garden beds, small off road parking spaces
Cat caves /dog beds	Weed suppressant covers for autumn dug garden beds
Bespoke insulation for difficult spaces – shed conversions, outdoor studio space, tiny houses, camping pods, shepherds’ huts.	Bio-degradable tree protectors to deter rabbits and sheep from chewing young trees
In addition, ideas around mixing natural fleece with resin to produce counter tops and furniture and household items have been considered. Could the process be used with 3D printing or injection moulding?	

This has been a substantial body of work, and is now ready for a formal feasibility study which the group are seeking funding for.



The group are now also a registered Community Interest Company with a bank account which will make a considerable difference to our credibility when it comes to future grant aid applications.

Outputs	Management Plan
<ul style="list-style-type: none"> • 200+ volunteer hours • 1 x part time job created • 43 people engaged • 	<ul style="list-style-type: none"> • PolSQ4 – Protect and promote traditional cultural distinctiveness within the AONB including the Welsh language. • LQCO6 – Investigate and increase our understanding of the cultural heritage of communities in the AONB. • POLCP2 – Retain and improve essential services and facilities for local people •
Outcomes	
<p>The project has made great strides in working with producers to explore the wider uses of locally produced, low grade fleece in the AONB.</p>	
County Split	
<ul style="list-style-type: none"> • Denbighshire 	

DRAFT

CRDV20_08 – Dark Skies

Applicant	–	Clwydian Range and Dee Valley AONB / Prosiect NOS
SDF	–	£5,000 (25% of total £20,000)
Match funding	–	£15,000 NOS Partnership designated landscapes partners

The Dark Skies NOS Partnership formed in 2018 which includes the designated landscapes of North Wales including the Clwydian Range and Dee Valley AONB, Anglesey AONB, Llŷn AONB and Snowdonia National Park Authority. The partnership, led by SNPA had been working on a bid to the Heritage Lottery Fund for continuation and development of the project activities however due to the Covid-19 pandemic all applications we put on hold therefore the partnership agreed to source alternative funding.

In particular funding was provided for the following;

Dark Sky Partnership Officer, Dani Robertson – The officers post is pivotal to the success of the North Wales Protected Landscapes partnership. The Officer ensures a coordinated approach across the region and partnership working also results in better value for money in procurement of items and services. The officer is also tasked with sourcing additional funding for project activities going forward.

The AONB's application to the IDA for Dark Sky Community Status has been delayed due to Covid-19 however the IDA have indicated that they would welcome an application in 2021. During the year Dani Robertson has facilitated online meetings between the AONB's and the IDA in preparation for application.



To adapt to new ways of working and the limitations Covid-19 posed to the project the Dark Skies Officer has been busy pulling together a programme of online engagement events which including topics such as;

- Telescopes for beginners
- Astronomy activities for children
- Star stories from Wales and beyond
- Archaeoastronomy – a brief history

To name a few. A total of 20 online events were held which attracted 669 attendees.

The Dark Sky Officer has assist the AONB team to look to act on removing light pollution, in particular at sites under local authority ownership such as Loggerheads Country Park. These will be used as 'flagship' examples of good lighting. Professional lighting Engineer company Cundall have been engaged to produce a guidance document and capital works have been identified and will be installed in summer 2021.

This year the project has also invested in a mobile observatory in the form of a Volkswagen T6 4WD Van. It contains a large amount of equipment including 4 telescopes, 10 pairs of astro binoculars and everything needed to run a wide range of varied events. The van will be used to travel to communities across North Wales to deliver events and raise awareness of Dark Skies. It is envisaged that the first events will take place in Autumn 2021.



Outputs	Management Plan
<ul style="list-style-type: none"> • 1 X Job supported • 20 x online engagement events • 669 people engaged • 1 x Community guidance document 	<ul style="list-style-type: none"> • PolHW4 – Ensure the natural benefits and services of the landscape are properly understood and valued. • HSAO3 – Increase the profile of the Historic Environment through effective and consistent interpretation and information. • PolCP3 – Ensure that local businesses and communities feel a sense of ownership and responsibility for their surroundings. • BEO2 – Conserve and enhance the character and local distinctiveness of historic villages, buildings and gardens within the AONB.
<p>Outcomes</p>	
<p>The project has been successful in sourcing additional Welsh Government funding.</p>	
<p>County Split</p>	
<ul style="list-style-type: none"> • Pan AONB 	

CRDV20_09 – Gwaenysgor Well Restoration

Applicant – Gwaenysgor Conservation Group
SDF – £3,760 (68% of total £5,556)
Match funding – £500 Trelawnyd and Gwaenysgor Community Council, £180 Gwaenysgor Conversation Group, £1116 volunteer time.

The Sustainable Development Fund provided funding for the commission and manufacture of a replica of the original village water pump and site it adjacent to the restored well on Well Lane, Gwaenysgor. The pump is not functional due to water quality issues however the fabrication of the new pump is authentic and corresponds to the original. The design and fabrication also comply with the Gwaenysgor Conservation Area Plan.

[Awaiting photo of pump in situ from applicants]

Unfortunately, due to Covid-19 the group were unable to produce the accompanying interpretation panel to accompany the pump in 2020. It was the intention of the group to involve various groups from the local community such as the art group and school children to input into the content of the information panel. Once Covid restrictions are relaxed and the community feel that it is safe to get together a panel will be produced to interpret the pump.

Outputs	Management Plan
<ul style="list-style-type: none"> • Replica historic feature returned to site of original. 	<ul style="list-style-type: none"> • PolHE1 - To conserve and enhance features and sites of archaeological, cultural or historic importance within the AONB. • PolHE2 - Increase our understanding of all aspects of the Historic Environment of the AONB. • HSA03 - Increase the profile of the Historic Environment through effective and consistent interpretation and information.
<p>Outcomes</p>	
<p>Small historic feature safeguarded for the future.</p>	
<p>County Split</p>	
<ul style="list-style-type: none"> • Flintshire 	

CRDV20_10 – Our picturesque landscape project work

Applicant	–	Our Picturesque Landscape Team
SDF	–	£5,000 (50% of total £10,000)
Match funding	–	£5,000 Heritage Lottery Funding

The Our Picturesque Landscape Project centres on the landscape of the Dee Valley and the Pontcysyllte Aqueduct and Canal World Heritage Site. It takes the theme of inspirational journeys that have been, and continue to be, a feature of the area which is cut by the canal, Telford's A5 and the River Dee. Visitors have drawn inspiration from this beautiful valley in art and poetry since the 18th century and it continues to draw tourists in search of the sublime.

Two added value projects were supported by the Sustainable Development Fund in 2020;

Elm benches

In 2020 a 200-year-old elm tree in the Dell at Plas Newydd had to be felled due to disease rendering it at risk of falling. The elm is a fantastic rare example of a mature elm and may have been planted by the Ladies of Llangollen when they lived in the house. To preserve this heritage, the applicants decided to have it milled and turned into benches to be sited within the Dell.



The benches have been interpretively carved with quotes from the ladies' memoirs. The benches were installed by AONB Rangers who also provided a training opportunity for some of the AONB's relief Rangers.



Clinker Path Repairs and Improvements

The Clinker path was installed in 2018/19, unfortunately due to severe weather and flooding the area has experienced some damage. Groundworks repairs and preparations have taken place for seating and interpretative materials.

Outputs	Management Plan
<ul style="list-style-type: none"> Improved paths Training and upskilling opportunities Bench installation Interpretation 	<ul style="list-style-type: none"> PolSQ2 – Secure the equitable, sustainable use of the area's natural resources to conserve and enhance the special qualities of the AONB. PolHW1 – Secure natural systems and networks that provide more and better places for nature for the benefit of wildlife and people PolHW4 – Ensure that the natural benefits and services of the landscape are properly understood and valued.
Outcomes	
<p>By connecting people with the landscape, with nature and with each other we will be promoting social well-being of local communities. The project has also interpreted the history of the AONB and provided training and upskilling opportunities.</p>	
County Split	
<p>Pan AONB</p> <ul style="list-style-type: none"> Denbighshire Wrexham 	

CRDV20_11 – Udfilod a Grug/Hyaenas & Heather

Applicant	–	Sean Harris
SDF	–	£3,000 (30% of total £10,000)
Match funding	–	£7,150 Arts Council of Wales Stabilisation Fund, £2,850HM Govt. self-employed grant

The original proposal for this project was to hold a week-long experimental residency of animation based artworks telling stories of the land and our constantly shifting relationship with it, past, present and future. Using unique materials and presentation techniques, the proposal was to use Loggerheads Country Park as the landscape setting to develop and evolve performances based on artwork, music and story-telling.

The outcomes of this project altered significantly as a consequence of the Coronavirus pandemic – in that the original activity proposed was non-functional within the context of COVID-related restrictions. However, in seeking to adapt to the circumstances in collaboration with AONB staff (who agreed that it was important to learn what *could* be done) the applicant arrived at an alternative configuration in the shape of a unique interactive animation-based app for handheld devices. It comprises a series of looping interactive animations, each with an accompanying narrative in English and Welsh that is available both as audio recording and written text. More information is available on an accompanying website which also provides a feedback facility so that the app can be evolved over time in response to user response.

The app *Udfil (Hyaena) – Gilbert Pidcock’s Ghost Menagerie* is available on the App Store for free and conveys a multi-tiered experience which will appeal to all ages and act as ‘portal’ to the landscape of the Clwydians. It is founded on contemporary scientific research relating to climate change and biodiversity loss, anthropogenic and otherwise.

Its intent is to create an enhanced connection with the landscape at Loggerheads Country Park, thereby aiding the formation of memory of the landscape and a sense of place. It does this by referring to lost or forgotten species whose remains have been found in multiple caves in the Clwydian Range. These are interactively ‘re-animated’ within the app and act as stimulus for playful and multi-sensory exploration of the landscape itself.





<p>Outputs</p> <ul style="list-style-type: none"> • 1 x application for electronic devices • 130 hours of volunteer time in-kind • 1 local supplier commissioned • Marketing and promotional materials produced 	<p>Management Plan</p> <ul style="list-style-type: none"> • PolART1 - To promote the sustainable use and enjoyment and understanding of the landscape of the AONB in a way that contributes to local prosperity and social inclusiveness. • PolART3 - Ensure that all visitors and residents are able to experience and enjoy the benefits of the special qualities of the AONB within environmental limits.
<p>Outcomes</p> <p>This 'walking artwork' addresses the narratives of climate change, time and scientific truth contained within the original proposal yet is more flexible, more accessible, further reaching and significantly more enduring.</p>	
<p>County Split</p>	
<ul style="list-style-type: none"> • Denbighshire • Flintshire 	

CRDV20_12 – Stay Eat Do

Applicant	–	Clwydian Range Tourism Group
SDF	–	£3,744 (55% of total £6,757.07)
Match funding	–	Clwydian Range Tourism Group Time In-Kind contribution from Board £3,013.07 (45% of total)

At a time of isolation and closure of tourism related businesses it has been essential that there is a central point of information, support and advice for small businesses in the AONB. This project provided the Clwydian Range Tourism Group (CRTG) with the funds to lengthen the contract of administration and marketing support to enable positive information and support to be available. CRTG and other businesses have been supported and updated throughout each stage of the pandemic.

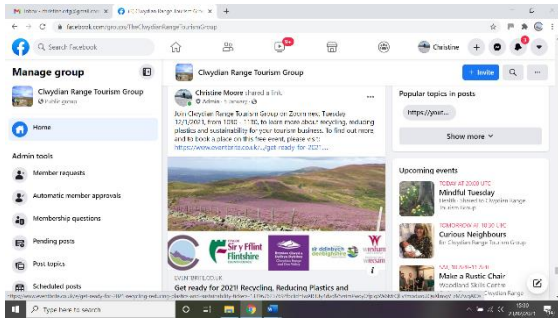
In particular, the Coordinating role has assisted the group to achieve the following;

- Covid-19 page on CRTG Website – this is updated regularly and informs members of current regulations and funding available.
- Consultation with members via three surveys gaining information on how the first lockdown impacted on their tourism business, and also when preparing to reopen in the summer. This information was shared with tourism partners including the three county councils and Visit Wales. The latest survey conducted in February 2021 was used as the basis for an online forum to businesses taking place on Tuesday 30th March 2021.
- Online forums and training via Zoom on the theme of Sustainability and engaged with Keep Wales Tidy, the AONB, reSource Denbighshire and Plastics Free Mold and Ruthin. The event was so well received that the group are developing a sustainability resource page on their website.
- Social media engagement on the Visit Clwydian Range Facebook page to promote sustainable tourism and projects.
 - Facebook: The Clwydian Range Tourism group page has 643 members, a 38% increase in members between 1/4/20 and 22/2/21.
 - Facebook: Visit Clwydian Range page (public facing) has 927 likes.
 - Twitter: 1122 followers (8/3/21)
 - Instagram: 1019 followers (8/3/21)
- Developed relationships with the wider tourism community in North East Wales. The group distribute updates from the Welsh Government, the three county councils, Visit Wales and Business Wales to members via newsletters, Facebook and



the Covid-19 page on their website. The wider tourism community are invited to online forums and were pleased to see that non-members and tourism ambassadors joining the forums.

This has been an opportunity to really highlight this area and how we should all be conserving it and how we can add to this enhancement



Outputs	Management Plan
<ul style="list-style-type: none"> • 324 volunteer hours recorded • 1 x Job Created • 4 x online forums • Numerous marketing and promotional activities • 144 people engaged in the project 	<ul style="list-style-type: none"> • PolART1 – To promote the sustainable use and enjoyment and understanding of the landscape of the AONB in a way that contributes to local prosperity and social inclusiveness • IVCO1 – Ensure that visitors and the tourism industry understand the need for, and support the conservation and enhancement of, the special qualities of the AONB as key assets upon which tourism is based. • IVO7 – Assist tourism businesses to embrace the opportunities and responsibilities of being in a protected area • ODPO6 – Investigate ways to promote the Trail with local tourism businesses and to develop initiatives that will strengthen businesses links • PolCP3 – Ensure that local businesses and communities feel a sense of ownership and responsibility for their surroundings
<p>Outcomes</p> <p>The project has supported tourism and hospitality businesses in the Clwydian Range and Dee Valley via dissemination of information to SME's but further to this they have also offered ideas and opportunities for businesses to prepare for the opening of the countryside again. CRTG's social media platforms have promoted the AONB within the limitations of lockdown rules and regulations, and maintained a lively and positive message about this beautiful area.</p>	
<p>County Split</p> <p>Pan AONB</p> <ul style="list-style-type: none"> • Denbighshire • Flintshire • Wrexham 	

CRDV20_13 – Flintshare Phase 3

Applicant – Flintshare
SDF – £3,818.41 (67% of total £5,686.41)
Match funding – Flintshire Community Chest £534/ Flintshare funds £428 / Donations for refreshments £30 / Volunteer time £876

FlintShare is a local community group dedicated to growing fresh fruit and vegetables primarily for the benefit of its members but also for the wider community in and around the AONB. They believe that organically and sustainably grown local food should be affordable for all. They aim to educate and reconnect people with how food is produced, sustainable food production and eating seasonally.

Funding from the Sustainable Development Fund has assisted the group to;

- Fence in growing areas to prevent damage from rabbits and badgers and the occasional sheep. A local contractor was employed and local suppliers were used. Volunteers also helped carrying materials from the lane down to the site and assisted the contractor throughout.
- Purchase of butterfly netting and timber to build brassica cages to reduce damage from caterpillars.
- Cutting of willow beds to provide willow for weaving to encourage fresh growth. The project had intended to hold a workshops for the young people and a public event however this has not been possible due to Covid.



Outputs	Management Plan
<ul style="list-style-type: none"> • Capital improvements to community project • 2 x Volunteering opportunities • 1 x local contractor and 2 x local suppliers supported • Promotional materials produced • 20 people engaged in the project 	<ul style="list-style-type: none"> • PolSQ3 – Secure the equitable, sustainable use of the area’s natural resources to conserve and enhance the special qualities of the AONB • PolHW1 – Secure natural and networks that provide more and better places for nature for the benefit of wildlife and people • PolCP3 – Ensure that local businesses and communities feel a sense of ownership and responsibility for their surroundings • PolART1 – To promote the sustainable use and enjoyment and understanding of the landscape of the AONB in a way that contributes to local prosperity and social inclusiveness.
<p>Outcomes</p> <p>The project has reconnected people with how food is produced, and teach them about sustainable food production and eating seasonally. It has also demonstrated that land within the AONB is good enough to produce great veg as well as meat.</p>	
<p>County Split</p> <ul style="list-style-type: none"> • Flintshire 	

DRAFT

DRAFT

CRDV20_15 – Tafarn y Gelyn Pond

Applicant	–	Llanferres Playing Field & Recreation Association
SDF	–	£4,928 (74% of total £6,654)
Match funding	–	Volunteer time £862 / Dŵr Cymru £250, Private donation £50, Crowd Funding £564

Tafarn y Gelyn Pond (OS: 618189) was originally restored & developed in 2003 in response to an opportunity offered by the diversion of the A494 out of Tafarn y Gelyn. At that time, the community came together under the management of the Llanferres Playing Field & Recreation Association with the aim of enhancing the appearance of an unused & neglected space, increasing biodiversity & creating an educational & informal recreation space.



17 years on, this application for Sustainable Development Funding was for major improvements to the tired site including;

- Replacement of damaged hard standing area to reinstate accessible higher level access area to pond.
- Upgrading of steps to viewing platform with new oak sleepers, safe treads and attachment to existing handrail
- New Welsh Oak benches



Through the support offered by the AONB team and the link to Amphibian and Reptile Conservation the group have identified the issues surrounding the loss of water in the pond and have been successful in obtaining funding for phase 2 which will replace the pond liner, modify the water depths, modify the viewing platform and provide educational opportunities. This has added much value to the project and will secure the future of the pond.



Wildflower planting has not as yet been undertaken because the applicants are now going to commence a phase 2 project to replace the liner and the planting will need to be done once the work to the liner is complete. The AONB continue to be engaged in the project and will update the panel of progress made.



Outputs	Management Plan
<ul style="list-style-type: none"> • Capital works to wildlife site • 38 people engaged • 1 volunteer/public event • Promotional materials produced • 47 volunteer hours recorded 	<ul style="list-style-type: none"> • PolSQ3 – Secure the equitable, sustainable use of the area’s natural resources to conserve and enhance the special qualities of the AONB • PolHW1 – Secure natural and networks that provide more and better places for nature for the benefit of wildlife and people • PolCP3 – Ensure that local businesses and communities feel a sense of ownership and responsibility for their surroundings • PolART1 – To promote the sustainable use and enjoyment and understanding of the landscape of the AONB in a way that contributes to local prosperity and social inclusiveness
Outcomes	
<p>The project has secured the long-term success of this site as an educational & informal public space. The project has also further increased the biodiversity of the site</p>	
County Split	
<ul style="list-style-type: none"> • Denbighshire 	

DRAFT

CRDV_17 Trevor Hall Research

Applicant	–	Pamela Williams
SDF	–	£900 (82% of total £1,100)
Match funding	–	Volunteer time £200

In early 2020 local historian Pamela Williams completed a comprehensive study of the history and cultural heritage of Trevor Hall, Llangollen. SDF support was secured to publish the study and make it more widely available through local libraries and possibly bookshops.

A low-key launch event was scheduled for March 2020 but the restrictions resulting from Covid-19 incurred a delay. The study will be launched once circumstances allow.

CRDV20_18 Corwen Giant

Applicant	–	Clwydian Range and Dee Valley AONB
SDF	–	£411.90 (67% of total £611.90)
Match funding	–	Volunteer time £200

The community of Corwen woke Drewyn the giant on Saturday 23rd March 2019, a once in a lifetime opportunity to witness the phenomena of a Giant moving through the landscape. On his journey he made gifts for his sweetheart and dropped personal belongings all around the town for residents and visitors to see. The project had hoped to hold a series of events during 2020 to tell the story of Drewyn to new audiences through storytelling, guided walks and giant community days however, due to Covid these events were not realised and the project was significantly reduced in size. A trail map was produced so that the local community and visitors to the town could undertake a self-led walk of Corwen and Coed Pen-y-Pigyn.

CANFOD CAWR CORWEN
DISCOVER CORWEN'S GIANT

DEFFRODD Y CAWR DREWYN
Deffrodd y Cawr Drewyn ar 23 Mawrth 2019 a chwasodd i Gorwen, gan oeddi llwybr o olion traed anferth. Yna syrthodd i gylch yr ysgol yn Nod Corwenna, ond yn parhau ei ddaith gollyngodd nifer o wrthyrcâu sy'n datgaliu cbeiau am Drewyn a chweri eraill yn Nhyryn Dyfrdwy.

THE GIANT DREWYN WOKES
The Giant Drewyn woke on the 23rd March 2019 and walked into Corwen, leaving a trail of massive footprints. He then fell asleep again in Nod Corwenna but during his journey he dropped several objects that reveal clues about Drewyn and other giants in the Dee Valley.

DEFFRODD Y CAWR DREWYN
Fie ddaeth i Gorwen i chwilio am ei gariad y Fonydd Laeth, ond mae'n ymddangos na ddaeth i'w ysgol - pwy bynnag yw hi fe fydd yn rhaid iddi aed i'w ysgol yn ddaith ei ddaith, ond mae'n ymddangos eu bod yn cynllunio antur gyda'i gilydd.

THE GIANT DREWYN WOKES
He came into Corwen in search of his sweetheart the Milkmaid, but it seems he didn't find her. Whoever she is she'll have to wait until he wakes again, but it looks like they are planning an adventure together.

DEFFRODD Y CAWR DREWYN
Yn gyfarfod roddi wedi sbelladu'r Fanydd, Cawr Drewyn, lawchob Corwen fel artheg i'w gariad fel rhywle iddi gweddi ei gwariad. Mae'n ymddangos eu bod yn cynllunio antur gyda'i gilydd.

THE GIANT DREWYN WOKES
Previously he built the hillfort, Caer Drewyn, above Corwen as a gift for his sweetheart as somewhere to keep her cattle. What his intentions are during this journey are a mystery, but there are clues to be found. He's too big to see if you stand in the field where he's now sleeping, but if you follow a trail of his lost possessions, to the viewpoint at the top of Pen-y-Pigyn you'll be able to see Drewyn and the footprints he made on his journey in the meadow below.

DEFFRODD Y CAWR DREWYN
Mae'r gwrthyrcâu a gollyngodd Drewyn yn rhoi lloer o glawiau am y cawr a'i gymddogaeth a'i gymddogaeth ond ni i'w ysgol i'w ysgol. Mae'r gwrthyrcâu yn gallwch rannu eich llunau i'w gylch ysgolau ynglŷn â'w ddaith a'i gariad a'i gariad.

THE GIANT DREWYN WOKES
The objects Drewyn has dropped give lots of clues about the giant and his neighbours, but nobody knows for sure what they all mean - you can share your pictures and ideas about what the objects tell us at: @WakingCorwensGiant

COUNTRYSIDE GRANTS SCHEME

Scheme administered by FWAG on behalf of the AONB

SDF Contribution (incl. admin fees)	£5,560.69
Match Funding Private Landowner contribution	£3,750.00

2020 saw five grants issued to landowners in the AONB to undertake boundary restoration work and pond creation/restoration.





OUTPUTS	MANAGEMENT PLAN
<ul style="list-style-type: none"> • 30m of hedge laying • 63m post and rail and planting • 23m² of drystone wall. • 1 x pond construction • 1 x pond restoration • Partnership working with private landowners. 	<ul style="list-style-type: none"> • BO2 – Using SDF and other funds to develop schemes that will maintain and enhance the most important boundaries in the AONB as well as other special features. • PoISQ2 – Secure the equitable, sustainable use of the area’s natural resources to conserve and enhance the special qualities of the AONB.
COUNTY ACTIVITY	OUTCOMES
<ul style="list-style-type: none"> • Denbighshire(x1) • Flintshire (x4) 	<p>Conservation of key landscape features in the AONB securing natural beauty.</p>

7. Level of Support

We have already received confirmation of commitment from the Welsh Government to provide £100,000.00 towards year 21 of the Sustainable Development Fund which is greatly received as the fund continues to be oversubscribed in the Clwydian Range and Dee Valley AONB.

Ceri Lloyd

Swyddog Datblygiad Cynaliadwy | Sustainable Development Officer

Ffôn / Tel: 01824 712721

www.ahnebryniauclwydadyffryndyfrdwy.org.uk

www.clwydianrangeanddeevalleyaonb.org.uk

